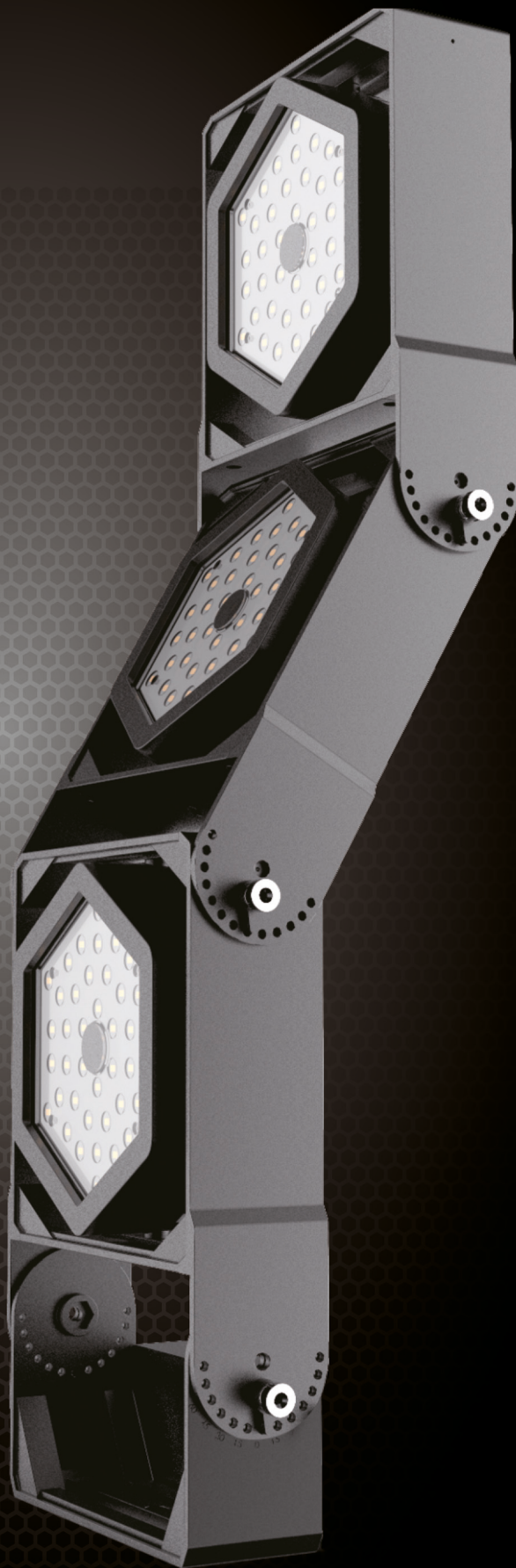


ILLuminec Led

MASTLIGHT T500 - 160lm/W
120°/90°/60°/30°/15°

100W à 1200W modulaire
Rotation Horizontal 360°



ILLuminec

Led

Mastlight T500 pour une utilisation Professionnelle 160lm/W

Voltage	AC90-305V 50/60Hz
Type Led	PHILIPS 3030 <small>PHILIPS LUMILEDS</small>
Driver	MEANWELL HLG
Facteur de puissance	>0.95
Efficacité lumineuse	160 lm/W
CCT	4000K
IRC	>75
Angle	120°/90°/60°/30°/15°
Optique	LentilleTranparante Polycarbonat + verre trempé

Corps aluminium pure 1070

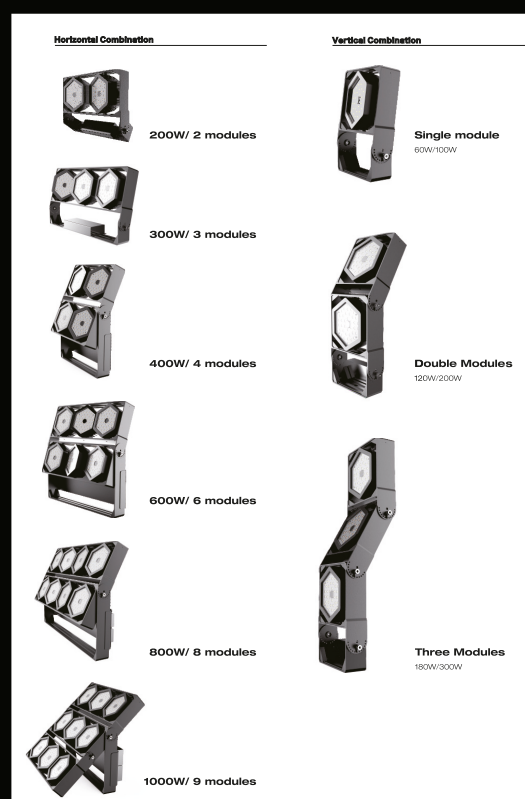
Durée de vie des LED L90>46 000 h bij TA <40°
L80>54 000 h bij TA <40°

Garantie 7 ans retour atelier

Pour températures ambiantes extrêmes -30 / 55°C
Temp stockage -40 / 85°C

Indice IP IP67
Résistance aux chocs IK08

Certificats



HB-T500

ILL-LHB-T500-100W740LXXX	100Watt	4000K	XXX°	16 000lm	328x208x92mm
ILL-LHB-T500-200W740LXXX	200Watt	4000K	XXX°	32 000lm	208x548x92mm
ILL-LHB-T500-300W740LXXX	300Watt	4000K	XXX°	48 000lm	208x768x92mm
ILL-LHB-T500-400W740LXXX	400Watt	4000K	XXX°	64 000lm	396x458x92mm
ILL-LHB-T500-600W740LXXX	600Watt	4000K	XXX°	96 000lm	576x419x92mm
ILL-LHB-T500-800W740LXXX	800Watt	4000K	XXX°	128 000lm	757x458x92mm
ILL-LHB-T500-900W740LXXX	900Watt	4000K	XXX°	144 000lm	639x572x92mm
ILL-LHB-T500-1200W740LXXX	1200Watt	4000K	XXX°	192 000lm	757x639x92mm

XXX = 120 -090-060-030-015

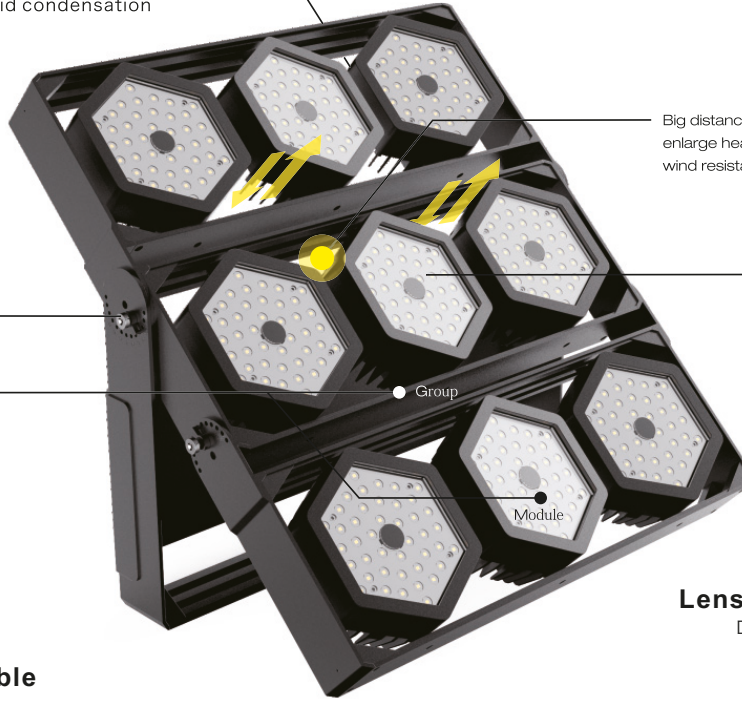
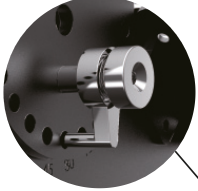


Breather

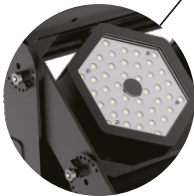
Balance temperature difference
avoid condensation

Easy and flexible adjustment

Plug safety button with spring



Big distance of each module which can
enlarge heat dissipation and reduce the
wind resistance



360° Angle adjustable

Module angle: 360°

Beam angle: 15° 30° 60° 90° 120°

Bracket angle: 15° 30° 45° 60° 75° 90°



Lens/Inside+Glass/Outside

Double protection for lens

MODULARIZATION ELEMENTS

